



August 2024



Contents

- ❖ Firm Overview
- ❖ CEO/CIO Bio
- ❖ Product Offerings
- ❖ Strategy Description & Design
- ❖ Markets & Ideal Environment
- ❖ Risk Management
- ❖ WEP Performance
- ❖ SEP Performance
- ❖ Drawdown Capture Comparison
- ❖ Strategies vs. S&P 500
- ❖ SMA Terms
- ❖ Awards
- ❖ Organizational Chart
- ❖ Investor Relations
- ❖ Disclosures

Buckingham Global Advisors Overview

- ❖ **Buckingham Global Advisors (BGA)** is a purely quantitative investment management firm that started investing client assets in March 2015 and uses a systematic approach to all investment decisions.
 - ❖ Strategies trade only liquid, listed S&P 500 futures and options on the CME.
 - ❖ Multiple programs provide the clients with favorable risk/reward opportunities in many different market environments.
 - ❖ The programs aim to achieve low volatility absolute return with low correlation with broad asset classes. The research and decision-process is quantitatively-driven with discretionary overlay.
- ❖ Founded by **Charles Dai** (University of Chicago – Masters in Analytical Finance, Chicago Kent Law School – JD, Sunderland University – BS in Information Systems) in 2014.
- ❖ **Registered with the Commodity Futures Trading Commission (CFTC) and is a member of the National Futures Association (NFA).**

Charles Dai – CEO/CIO

Work Experiences

- ❖ **Buckingham Global Advisors – Founder, CEO and CIO**
- ❖ **Western Asset Management Company (\$500 Billion AUM) – Project Manager of Fixed Income derivative trading**
- ❖ **Modern Asset Group (Multi-advisor fund seeded by MF Global) – Senior Quantitative Analyst overseeing Risk Management and firm-wide strategy in selecting partner trading advisors**
- ❖ **Deutsche Bank – Propriety Sales and Trading Desk focused on Asian Equities**
- ❖ **CFTC Enforcement Division – Chicago Branch Intern**
- ❖ **EMC Corporation – Software Engineer**
- ❖ **Ford Motor Company – Software Engineer**



Education

- ❖ **University of Chicago Booth Business School – MBA in *Analytic Finance***
- ❖ **Chicago-Kent Law School – Juris Doctorate in *Corporate Law***
- ❖ **Sunderland University – BSc in *Information Systems***

Buckingham Global Product Offerings

Both strategies are systematic, algorithmic options volatility / volatility arbitrage program

Weekly E-mini Program (“WEP”)

- Strategy Focus** ❖ *Trading weekly options expiring within 8 days*
- Target Rate of Return:** ❖ *12-15% net per year*
- Target Annual Volatility:** ❖ *< 7% annual volatility*
- Target Daily Volatility:** ❖ *20% of S&P 500’s Daily Volatility*
- Target Sharp Ratio:** ❖ *2 + after all fees*
- Max Daily Drawdown(1):** ❖ *1% with position-level hedging*
- Inception Date:** ❖ *March 2015 (8+ year track record) via SMAs*

Small E-mini program (“SEP”)

- ❖ *Trading monthly options expiring within 30 days*
- ❖ *15-18% net per year*
- ❖ *< 8% annual volatility*
- ❖ *40% of S&P 500’s Daily Volatility*
- ❖ *2 + after all fees*
- ❖ *5% with position-level hedging*
- ❖ *December 2018 (5+ year track record) via SMAs*

(1) “Position level hedging” means that for each position, the Advisor sets up a stop loss mechanism. Once the stop loss level is reached, the Advisor neutralizes the position by hedging or closing the position. With respect to “Max Daily Drawdown”, we estimate if all the positions have breached the stop loss level, the estimated max drawdown level is reached for any particular day. The placement of contingent orders Buckingham Global, such as a “stop-loss” order will not necessarily limit your losses to the intended amounts, since market conditions may make it impossible to execute such orders



Strategy Description & Design

❖ Strategy Description

- ❖ Programs focus on short duration derivatives – most options expires within 2-8 days for WEP and 30 day for SEP.
- ❖ The strategy systematically identifies the option strikes with best risk/reward ratio.
- ❖ Major buy-side firms buy options to hedge the long equity exposure. Such biases creates imbalance – our edge.
- ❖ Drawdown control – post 2020 Covid-19 crash, the strategy has implemented P/L driven hedging mechanism to control risks. It aims to limit daily drawdown within pre-defined ranges.

❖ Strategy Design

- ❖ The strategy uses statistical analysis to assess the attractiveness of any trading opportunities.
- ❖ Employs volatilities matrix and short-term market indicators to determine trade entry, exit and ratios/weights.
- ❖ Optimize portfolio duration based on market condition systematically: Lower volatility – trade longer duration, Higher volatility – trade shorter duration

Markets & Ideal Environment

❖ Market Selections

- ❖ Up to 100% short term S&P 500 futures options, occasionally S&P 500 futures mainly for hedging / market exit.
- ❖ Long option hedging when our models detect market uneasiness or weekly P/L (Position or Portfolio) drops below certain thresholds.

❖ Ideal environment

- ❖ Strategies generally benefit from declining volatility after positions are established but will actively hedge positions when unexpected volatility shocks occur (geopolitical risks, catastrophic events etc.)
- ❖ Low to medium level of volatility period.
- ❖ High Volatility period – adopted a long vol mechanism (model enhanced after April 2020) which could potentially generate outsized alpha for the portfolio.

❖ Correlation and performance relative to US equities market

- ❖ 40% correlation with S&P 500 index. The program correlates higher in Bull (rallies with the S&P 500) and correlates lower in Bear Markets.
- ❖ The strategy expects to outperform the index in bear market than in a bull market because the option premium is usually high enough to offset the possible drawdown periods.

Risk Management

Multi-facet Risk Management Approach

❖ Stress Test

- ❖ Identify maximum potential drawdown allowance on the trading model frequently
- ❖ Hundreds of volatility events minute by minute analysis on the position level. (Studied periods: 2008-2009 Financial Crisis, post 2011 European Debt Crises, 9/11 Terrorist Event, 2015 Asian Market Meltdown, 2018 Trade War, 2020 Covid-19 Crash)

❖ Position Level Drawdown management

- ❖ Real-time position monitoring 24 hours day and night.
- ❖ Post Covid-19 crash, implemented P/L level hedge/exit trigger when our individual position or portfolio is in certain pre-defined drawdowns.
- ❖ Long volatility Alpha – About 30% of volatility events, our long volatility component can generate outsized alpha for the portfolio. Focus on controlling the drawdown on position level on daily basis. Based on the position drawdown allowance, we enforce maximum portfolio drawdown accordingly.

❖ Position Limit Control

- ❖ Trading system set position limits to avoid fat finger problems.
- ❖ Prime Broker margin analysis pre-trade and post-trade.

❖ Liquidity Analysis

- ❖ Quantify liquidity changes on futures and options.

❖ Leverage Control

- ❖ Maintain a strict notional leverage bandwidth especially in heightened volatility periods.

Weekly E-Mini Program “WEP” Performance

	August 2024	3 Months	YTD	1 yr.	3 yrs.	5 yrs.	Buckingham Strategy since 3/2015
Weekly E-mini Program	1.18%	3.42%	7.54%	13.66%	29.37%	40.48%	177.40%
S&P 500	2.28%	6.87%	18.43%	25.32%	61.37%	89.78%	168.31%

	Jan	Feb	Mar	Apr	May	Jun	Jul	Aug	Sep	Oct	Nov	Dec	YTD
2024	0.70	0.94	1.31	-0.08	1.03	1.01	1.23	1.18					7.54
2023	1.07	0.51	1.02	0.76	0.98	0.61	1.29	1.17	0.98	1.43	1.03	0.96	12.49
2022	-0.07	-4.65	1.49	0.54	1.72	-2.02	1.35	1.50	0.30	1.38	0.96	0.03	2.34
2021	0.84	1.23	1.44	0.68	0.82	1.43	0.61	1.35	0.74	1.30	0.72	1.64	13.58
2020	0.78	-10.61	-3.53	0.95	0.84	1.12	1.62	1.30	1.11	-0.62	1.38	1.42	-4.84
2019	1.88	1.75	1.53	1.15	-2.64	2.16	1.22	1.27	1.14	1.13	1.29	1.13	13.73
2018	2.09	-4.75	0.96	2.48	2.10	1.67	2.41	1.75	1.65	-4.95	1.56	-1.38	5.29
2017	2.04	1.92	2.17	1.73	2.10	1.68	1.54	2.12	1.44	1.63	1.43	1.50	23.51
2016	-6.28	4.37	2.31	1.75	2.20	1.70	1.85	1.72	1.77	1.96	2.35	1.78	18.50
2015			2.51	1.76	2.68	1.81	2.67	-6.09	2.96	2.64	3.42	1.58	16.70

	Annualized Compounded ROR	Sharpe Ratio	Volatility(%)	Correlation
Weekly E-mini Program	11.09%	1.57	6.94%	1.00
S&P 500	11.48%	0.73	15.69%	0.53

Worst Peak-To-Valley Drawdown: -13.76% (Jan 2020 to March 2020)

The annualized compounded rate of return calculates the rate of return on the program by taking a geometric mean of the month returns on an annual basis. The annualized rate of return differs from the annual rate of return because it accounts for the compounding of investment earnings over time. Volatility is the monthly volatility which is the average monthly return divided by monthly standard deviation, then annualized for the result.

** All WEP returns are net of fees



TRADING IN FUTURES INVOLVES A SUBSTANTIAL RISK OF LOSS. ONLY RISK CAPITAL SHOULD BE USED. PAST PERFORMANCE IS NOT INDICATIVE OF FUTURE RESULTS. PLEASE CONSULT YOUR OWN FINANCIAL, LEGAL, DUE DILIGENCE AND TAX COUNSEL BEFORE MAKING AN INVESTMENT IN THIS TYPE OF PRODUCT.

Small E-Mini Program “SEP” Performance

	August 2024	3 Months	YTD	1 yr.	3 yrs.	5 yrs.	Buckingham Strategy since 12/2018
Small E-mini Program	-4.40%	0.23%	9.48%	17.44%	41.54%	54.28%	69.11%
S&P 500	2.28%	6.87%	18.43%	25.32%	61.37%	89.78%	125.29%

	Jan	Feb	Mar	Apr	May	Jun	Jul	Aug	Sep	Oct	Nov	Dec	YTD
2024	1.63	2.09	2.48	-0.18	2.91	2.54	2.25	-4.40					9.48
2023	1.30	1.40	-0.88	1.54	1.56	1.74	2.20	1.86	1.41	2.21	1.60	1.86	19.30
2022	-2.15	-6.99	3.34	-0.88	3.92	-1.00	2.53	2.40	0.05	2.95	1.58	0.54	5.94
2021	-0.84	0.22	2.52	1.29	0.46	2.11	1.75	1.05	1.21	1.64	-2.90	2.44	11.36
2020	1.31	-10.11	-3.56	0.71	0.31	1.35	1.66	1.37	1.26	-1.78	1.32	1.91	-4.84
2019	1.63	1.50	1.62	1.20	-1.32	1.87	1.03	1.29	1.23	0.94	1.20	1.51	15.06
2018												-2.54	-2.54

	Annualized Compounded ROR	Sharpe Ratio	Volatility(%)	Correlation
Small E-mini Program	9.04%	1.14	7.90%	1.00
S&P 500	14.17%	0.78	18.22%	0.54

Worst Peak-To-Valley Drawdown: -13.30% (Jan 2020 to March 2020)

The annualized compounded rate of return calculates the rate of return on the program by taking a geometric mean of the month returns on an annual basis. The annualized rate of return differs from the annual rate of return because it accounts for the compounding of investment earnings over time. Volatility is the monthly volatility which is the average monthly return divided by monthly standard deviation, then annualized for the result.

** All SEP returns are net of fees



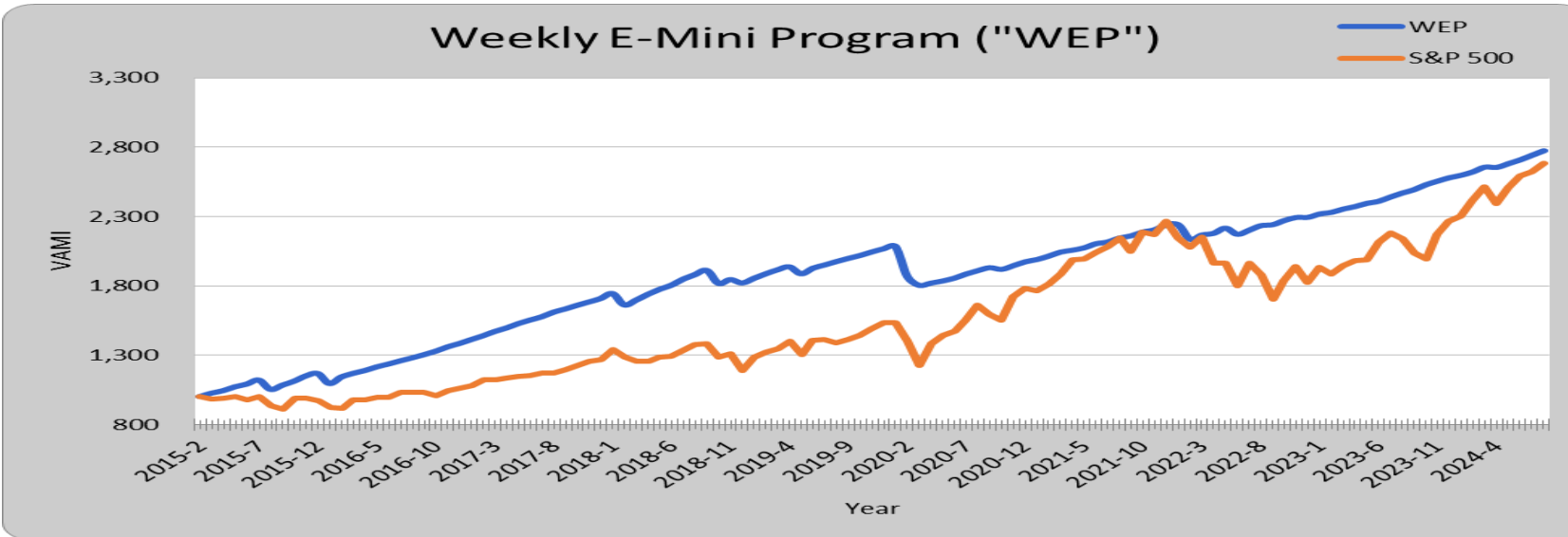
Drawdown Capture Comparison – 3 years

Drawdown Month	S&P 500	WEP Net Return **	WEP Outperform	SEP Net Return**	SEP Outperform
September 2020	-3.91	1.11	5.02	1.26	5.17
October 2020	-2.80	-0.62	2.18	-1.78	1.02
January 2021	-1.12	0.84	1.96	-0.84	0.28
September 2021	-4.73	0.74	5.47	1.21	5.94
November 2021	-0.83	0.72	1.55	-2.90	-2.07
January 2022	-5.25	-0.07	5.18	-2.15	3.10
February 2022	-3.14	-4.65	-1.51	-6.99	-3.85
April 2022	-8.81	0.54	9.35	-0.88	7.93
June 2022	-8.40	-2.03	6.37	-1.00	7.40
August 2022	-4.24	1.50	5.74	2.40	6.64
September 2022	-9.33	0.30	9.63	0.05	9.38
December 2022	-5.88	0.03	5.91	0.54	6.42
February 2023	-2.60	0.51	3.11	1.40	4.00
August 2023	-1.79	1.17	2.96	1.86	3.65
September 2023	-4.86	0.98	5.84	1.41	6.27
October 2023	-2.19	1.43	3.49	2.21	4.49
April 2024	-5.00	-0.08	5.00	-0.18	5.25
Average	-4.40	0.15	4.47	-0.23	4.10

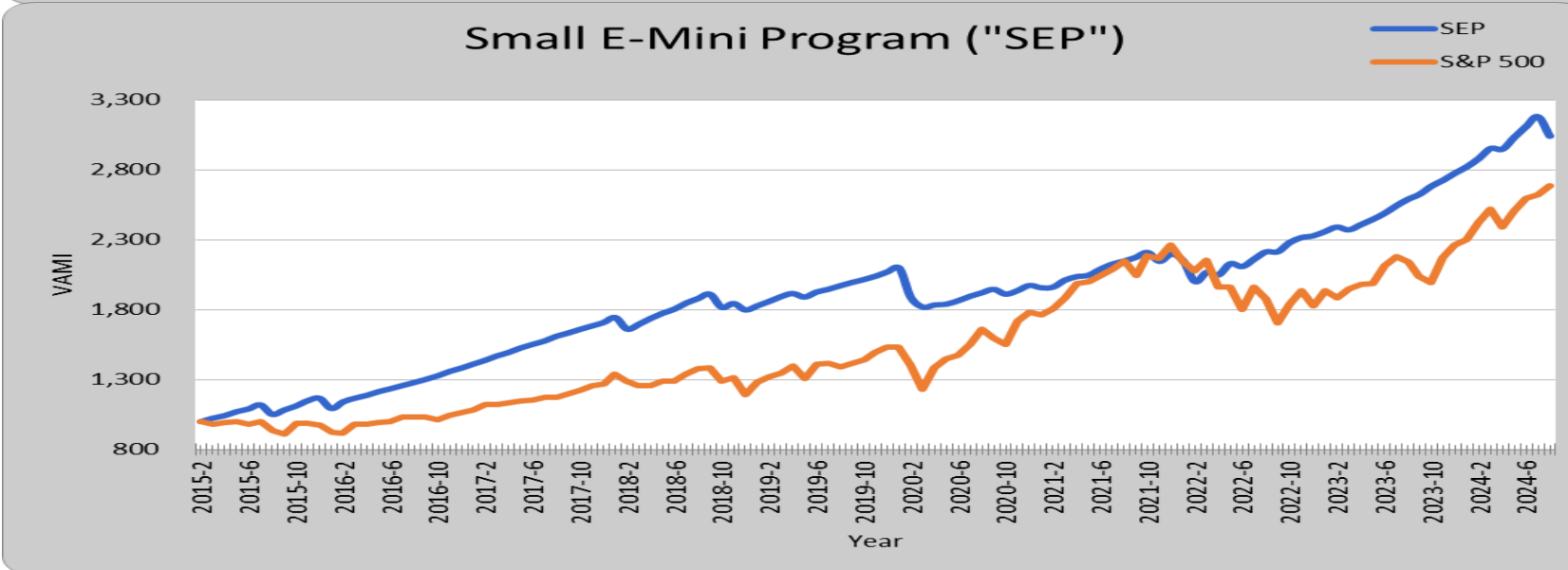
** WEP & SEP returns are net of fees



Buckingham vs. S&P 500



As of March 2015, started managing client assets in Separately Managed Accounts (SMA). Chart shows returns of independently compiled SMA composite since inception.



The SEP Program became its own separate offered program in December 2018 when it was separated out of WEP track record.



SMA Terms

Program Name	Weekly E-Mini Program
Inception Date	March 2015
Target Return	12-15% net of fees
Fees	Management Fees 2%, Incentive Fees 20%
Minimum Investment	\$200,000
Additional Amount	\$100,000
Lock Period	No Lock
Subscription	Weekly

Program Name	Small E-Mini Program
Inception Date	December 2018
Target Return	15-18% net of fees
Fees	Management Fees 2%, Incentive Fees 20%
Minimum Investment	\$60,000
Additional Amount	\$60,000
Lock Period	No Lock
Subscription	Weekly



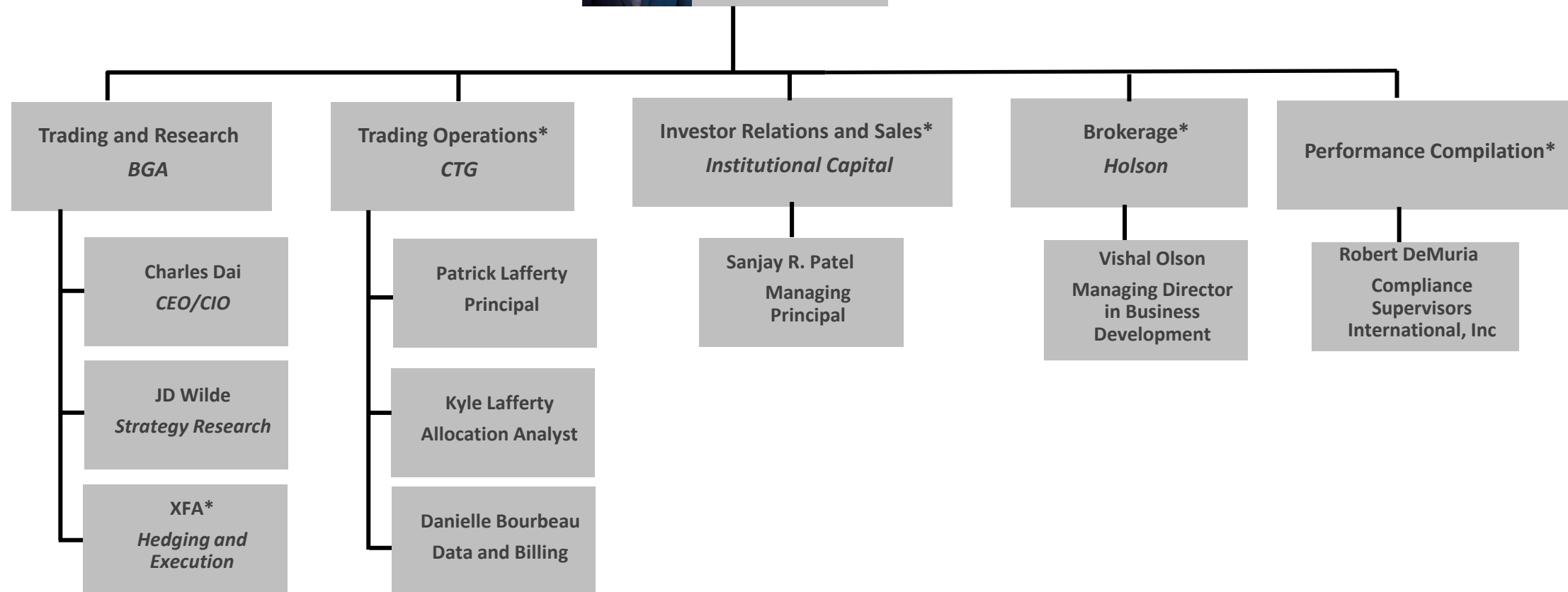
BarclayHedge Awards

- ❖ Year of 2022 Barclay Hedge Awards: SEP Ranked #10 in Option Traders Category.
- ❖ Year of 2021 Barclay Hedge Awards: WEP Ranked #7 in Option Traders Category.
- ❖ Year of 2021 Barclay Hedge Awards: SEP Ranked #9 in Option Traders Category.
- ❖ Year of 2019 Barclay Hedge Awards: SEP Ranked #9 in Option Traders Category.
- ❖ Year of 2018 Barclay Hedge Awards: WEP Ranked #6 in Option Traders Category.
- ❖ Year of 2017 Barclay Hedge Awards: WEP Ranked #4 in Option Traders Category.
- ❖ Year of 2017 Barclay Hedge Awards: WEP Ranked #8 in Short Term Category.
- ❖ Year of 2016 BarclayHedge Awards: WEP Ranked #6 in Option Traders Category.

Please note that the ranking applies only to those CTAs who submit their trading results. The rankings in no way purport to be representative of the entire universe of commodity trading advisors.



Buckingham Organization



* Outsourced third parties who provide services to BGA in running Buckingham SMA and Fund products

Investor Relations

For Further information, please contact:

Buckingham Global Advisors, LLC
Ladera Ranch, California 92694

Charles Dai - CEO
(949) 664-1501
cdai@buckinghamga.com

Sanjay R. Patel – Investor Relations
(914) 588-9662
Sanjay.patel@insticap.com

Disclosure Statements

THIS PRESENTATION IS INTENDED TO PROVIDE GENERAL INFORMATION ONLY AND OUR SERVICE ARE NOT DESCRIBED IN THEIR ENTIRETY. YOU SHOULD CONTACT BUCKINGHAM DIRECTLY IF YOU ARE INTERESTED IN KNOWING ABOUT OR USING OUR INVESTMENT ADVISORY SERVICES.

THE INFORMATION PRESENTED DOES NOT INVOLVE THE RENDERING OF PERSONALIZED INVESTMENT, FINANCIAL, LEGAL OR TAX ADVICE, BUT IT LIMITED TO THE DISSEMINATION OF GENERAL INFORMATION ON THE PRODUCTS AND SERVICES. BEFORE IMPLEMENTING ANY OF THE OPTIONS PRESENTED, A PROFESSIONAL ADVISER SHOULD BE CONSULTED ABOUT THE LEGAL, TAX AND FINANCIAL SUITABILITY OF THIS TYPE OF INVESTMENT. THIS PRESENTATION SHOULD NOT BE VIEWED AS AN OFFER TO BUY OR SELL, OR A SOLICITATION OF ANY OFFER TO BUY OR SELL THE SECURITIES MENTIONED HEREIN.

PAST PERFORMANCE IS NO GUARANTEE FUTURE RESULTS. NO PERSON WHO IS NOT, EITHER ALONE OR WITH THEIR ADVISER, CAPABLE OF EVALUATING THE MERITS AND RISKS OF PROSPECTIVE INVESTMENTS SHOULD INVEST. NO REPRESENTATION IS MADE BUCKINGHAM WILL OR IS LIKELY TO ACHIEVE ITS INVESTMENT OBJECTIVES OR THAT ANY INVESTOR WILL OR IS LIKELY TO ACHIEVE RESULTS COMPARABLE TO THOSE SHOWN OR WILL MAKE ANY PROFIT AT ALL OR WILL BE ABLE TO AVOID INCURRING SUBSTANTIAL LOSSES.

INFORMATION PRESENTED IS BELIEVED TO BE FACTUAL AND UP-TO-DATE, BUT WE DO NOT GUARANTEE ITS ACCURACY AND IT SHOULD NOT BE REGARDED AS A COMPLETE ANALYSIS OF THE SUBJECTS DISCUSSED. ALL EXPRESSION OF OPINION REFLECT THE JUDGEMENT OF THE AUTHORS AS OF THE DATE OF PREPARATION AND ARE SUBJECT TO CHANGE.

CERTAIN INFORMATION HAS BEEN PROVIDED BY THIRD-PARTY SOURCES AND, ALTHOUGH BELIEVED TO BE RELIABLE, IT HAS NOT BEEN INDEPENDENTLY VERIFIED AND ITS ACCURACY OR COMPLETENESS CANNOT BE GUARANTEED.

THE RISK OF LOSS IN TRADING COMMODITIES CAN BE SUBSTANTIAL. YOU SHOULD THEREFORE CAREFULLY CONSIDER WHETHER SUCH TRADING IS SUITABLE FOR YOU IN LIGHT OF YOUR FINANCIAL CONDITION. IN CONSIDERING WHETHER TO TRADE OR TO AUTHORIZE SOMEONE ELSE TO TRADE FOR YOU, YOU SHOULD BE AWARE OF THE FOLLOWING:

- (1) IF YOU PURCHASE A COMMODITY OPTION, YOU MAY SUSTAIN A TOTAL LOSS OF THE PREMIUM AND OF ALL TRANSACTION COSTS.
- (2) IF YOU PURCHASE OR SELL A COMMODITY FUTURE OR SELL A COMMODITY OPTION, YOU MAY SUSTAIN A TOTAL LOSS OF THE INITIAL MARGIN FUNDS AND ANY ADDITIONAL FUNDS THAT YOU DEPOSIT WITH YOUR BROKER TO ESTABLISH OR MAINTAIN YOUR POSITION. IF THE MARKET MOVES AGAINST YOUR POSITION, YOU MAY BE CALLED UPON BY YOUR BROKER TO DEPOSIT A SUBSTANTIAL AMOUNT OF ADDITIONAL MARGIN FUNDS, ON SHORT NOTICE, IN ORDER TO MAINTAIN YOUR POSITION. IF YOU DO NOT PROVIDE THE REQUIRED FUNDS WITHIN THE PRESCRIBED TIME, YOUR POSITION MAY BE LIQUIDATED AT A LOSS, AND YOU WILL BE LIABLE FOR ANY RESULTING DEFICIT IN YOUR ACCOUNT.
- (3) UNDER CERTAIN MARKET CONDITIONS, YOU MAY FIND IT DIFFICULT OR IMPOSSIBLE TO LIQUIDATE A POSITION. THIS CAN OCCUR, FOR EXAMPLE, WHEN THE MARKET MAKES A "LIMIT MOVE."
- (4) THE PLACEMENT OF CONTINGENT ORDERS BY YOU OR YOUR TRADING ADVISOR, SUCH AS A "STOP-LOSS" OR "STOP-LIMIT" ORDER, WILL NOT NECESSARILY LIMIT YOUR LOSSES TO THE INTENDED AMOUNTS, SINCE MARKET CONDITIONS MAY MAKE IT IMPOSSIBLE TO EXECUTE SUCH ORDERS.
- (5) A "SPREAD" POSITION MAY NOT BE LESS RISKY THAN A SIMPLE "LONG" OR "SHORT" POSITION.
- (6) THE HIGH DEGREE OF LEVERAGE THAT IS OFTEN OBTAINABLE IN COMMODITY TRADING CAN WORK AGAINST YOU AS WELL AS FOR YOU. THE USE OF LEVERAGE CAN LEAD TO LARGE LOSSES AS WELL AS GAINS. IN SOME CASES, MANAGED COMMODITY ACCOUNTS ARE SUBJECT TO SUBSTANTIAL CHARGES FOR MANAGEMENT AND ADVISORY FEES. IT MAY BE NECESSARY FOR THOSE ACCOUNTS THAT ARE SUBJECT TO THESE CHARGES TO MAKE SUBSTANTIAL TRADING PROFITS TO AVOID DEPLETION OR EXHAUSTION OF THEIR ASSETS.

THIS BRIEF STATEMENT CANNOT DISCLOSE ALL THE RISKS AND OTHER SIGNIFICANT ASPECTS OF THE COMMODITY MARKETS. YOU SHOULD THEREFORE CAREFULLY STUDY COMMODITY TRADING BEFORE YOU TRADE.

TRANSACTIONS ON MARKETS LOCATED OUTSIDE THE UNITED STATES, INCLUDING MARKETS FORMALLY LINKED TO A UNITED STATES MARKET MAY BE SUBJECT TO REGULATIONS WHICH OFFER DIFFERENT OR DIMINISHED PROTECTION. FURTHER, UNITED STATES REGULATORY AUTHORITIES MAY BE UNABLE TO COMPEL THE ENFORCEMENT OF THE RULES OF REGULATORY AUTHORITIES OR MARKETS IN NON-UNITED STATES JURISDICTIONS WHERE YOUR TRANSACTIONS MAY BE EFFECTED. BEFORE YOU TRADE YOU SHOULD INQUIRE ABOUT ANY RULES RELEVANT TO YOUR CONTEMPLATED TRANSACTIONS AND ASK THE FIRM WITH WHICH YOU INTEND TO TRADE FOR DETAILS ABOUT THE TYPES OF REDRESS AVAILABLE IN BOTH YOUR LOCAL AND OTHER RELEVANT JURISDICTIONS.

THIS COMMODITY TRADING ADVISOR IS PROHIBITED BY LAW FROM ACCEPTING FUNDS IN THE TRADING ADVISOR'S NAME FROM A CLIENT FOR TRADING COMMODITY INTERESTS. YOU MUST PLACE ALL FUNDS FOR TRADING WITH A FUTURES COMMISSION MERCHANT.

PAST PERFORMANCE IS NOT INDICATIVE OF FUTURE RESULTS. PLEASE CONSULT YOUR OWN FINANCIAL, LEGAL, DUE DILIGENCE AND TAX COUNSEL BEFORE MAKING AN INVESTMENT IN THIS TYPE OF PRODUCT.